

Historic, archived document

Do not assume content reflects current scientific knowledge, policies, or practices.

*no offo discount on
order \$10- or over*

LIBRARY

RECEIVED

★ APR 9 1929 ★

U. S. Department of Agriculture.

Trade

62,61

Catalog

1928 — 1929



Gladioli

Cannas

Dahlias

I r i s e s

Liliums

Peonies

Miscellaneous



John Lewis Childs

Incorporated

Flowerfield

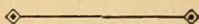
Long Island, N. Y.

WE TAKE pleasure in presenting here-
with our Wholesale Catalogue of Bulbs,
Roots, etc., for the season of 1928-1929.

In the growing of our stocks we endeavor to give most careful attention to cultivation, to insure prime quality, and we have taken great pains to keep our stocks pure and true to name.

In making up this catalogue, we have eliminated many items that we consider not worth growing, in view of later and better ones now on the market. It is our wish to offer our customers only the best in our line.

JOHN LEWIS CHILDS, Inc.
Flowerfield, Long Island, N. Y.



TERMS

Orders from unknown parties must be accompanied with cash or with satisfactory reference.

All bills due 60 days net. 3 per cent cash with order. 2 per cent in 15 days.

Less than 6 of a kind 1-10 of Dozen price, 6 at Dozen rate, 25 at Hundred rate, 250 at Thousand rate.

No discount on orders or invoices under \$10.00.

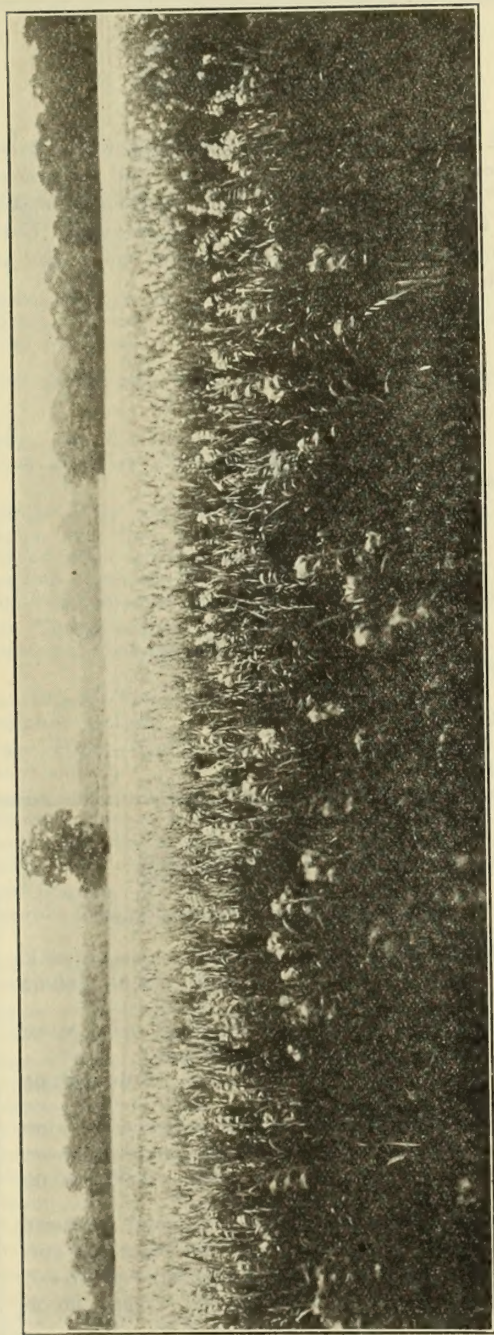
Prices are F. O. B. Flowerfield, L. I., N. Y., fifty miles from New York City.

All goods travel at risk of consignee.

Please advise us how you want order shipped.

Boxes and packing extra at cost.

Prices subject to change without notice.



70 Acres of Gladioli. One of Our Fields.

Gladioli

WE HAVE been closely identified with Gladioli for over 30 years, producing and introducing many varieties of our own and continually making tests of varieties offered by other growers, finally offering to our trade only the best in color, size and growth.



NEW VARIETIES

Recent Introductions of Our Own

- CAMEO PINK**—Beautiful shade cameo pink.
3.00 20.00 180.00
- CORAL GEM**—Prim.—Bright coral red to straw yellow, carmine blotch in throat.
1.00 7.00 60.00
- FLOWERFIELD GEM**—Light yellow with crimson blotch. Large flower and a strong grower.
.90 6.00 50.00
- SALMON FLAME**—Prim. — Salmon, suffused and flamed strawberry pink on edges and outside of petals. Carmine blotch in throat.
1.00 7.00 60.00

Gladioli

GENERAL LIST

As far as possible we give the type of flower and the introducer; Ch. Childs; Gand., Gandavensis; Lem., Lemoine; Prim., Primulinus; Kund., Kunderd.

Note.—Prices are based on first size bulbs, 1½ inch up. Twenty (20) per cent less for second sizes, 1¼ to 1½ inch.

Prices quoted are per dozen, per 100 and per 1,000 in the order given.

Adora. —Kund.—Creamy white ground; soft pink lines on primrose yellow throat—			
	\$0.70	\$5.00	\$45.00
Albania. —Pure glistening white flower, wide open, over four inches in diameter, petals broad with well rounded tips. The finely ruffled edges of the petals give to the individual flower an artistic finish	.70	4.50	40.00
Alice Tiplady. —Prim. Kund.—Large flowers; beautiful orange-saffron color; choice—	.30	4.00	30.00
Alma Gluck. —Prim.—Peach red blotched with sulphur yellow	1.50	10.00	90.00
Altair. —Prim.—Extra tall, color purest salmon-saffron	.70	4.50	40.00
America. —Ch. Childs—Delicate lavender-pink flowers of large size, borne on strong stems, and well placed; splendid habit; still very popular as a cut flower variety	.50	3.00	25.00
Anna Eberius. —Rhodamine purple with pansy purple blotch in throat. Fine form—	.90	6.00	50.00
Annie Wigman. —Lem.—Pure yellow with soft red blotch	.30	4.00	30.00
Arizona. —Gand. Kund.—Dark pink with maroon markings on lower petals	.75	5.00	45.00
Arlon. —Prim.—Very large wide petaled flower of light salmon. Grand red throat with deeper central lines. Showy and conspicuous	1.25	9.00	80.00
Atherton. —Deep salmon-rose, petals blue bordered	.75	5.00	45.00
Attraction. —Ch. Childs—Deep dark, rich crimson, with a very conspicuous large pure white center and throat	.60	4.00	35.00
Autumn Queen. —Lem.—Color cream-yellow, upper petals suffused with peach blossom pink; lower petals striped carmine-red. When planted late it is extra fine—	.60	4.00	35.00

GLADIOLI—Continued

Baron Hulot —Lem. Lemoine—Rich deep color of an indigo shade90	6.00	50.00
Black Beauty —Gand.—Very deep red, stained black, large round blossoms.....	.75	5.00	45.00
Blue Bird —Lem. Vos—Grayish blue, flaked with violet-purple; with large dusky, dull violet blotch edged yellow.....	1.00	7.00	60.00
Bopeep —Ch. Childs—Rather dwarf in growth with compact spike; flowers large orange-salmon, with large primrose-yellow center, blotched with crimson.....	.75	5.00	45.00
Brenchleyensis —Gand. Bunyard—Vermilion-scarlet; fine variety40	2.50	20.00
Bridgehampton —Scarlet to begonia rose—	.75	5.00	45.00
Byron L. Smith —Lavender-pink on white ground90	6.00	50.00
Cameo Pink —Beautiful shade cameo pink—	2.75	19.00	170.00
Capella —Prim.—Bright and clear reddish-orange75	5.00	45.00
Capt. Boynton —White brushed lavender, large bloom	3.50	20.00	150.00
Cardison —Deep velvety red with nearly black throat	1.50	10.00
Carmen Sylva —Pure snow white, throat slightly penciled lilac70	4.50	40.00
Catherine —Lem.—Pale lavender with small maroon blotch, tipped white.....	1.00	6.50	55.00
Charles Bertier —Tall and vigorous plant. Long spike of very large flowers, well opened, light lilac suffused with darker lilac on the edges of the petals. Large white blotch on the lower petals.....	2.00	15.00	140.00
Charmer —Ch. Miller—Large, broad-petaled flowers of soft mauve-pink, blending off lighter in the throat which is penciled carmine-lake with a large blotch of same color on the central lower petal.....	.90	6.00	50.00
Chicago White —Gand. Kund.—White with lavender markings. Small flower, but early	.50	2.75	20.00
Cincinnati —Ch. Childs—A gorgeous, flaming scarlet, deep and rich, with maroon and gray mottled throat	1.50	10.00
Conspicuous —Ch. Childs—Beautiful clear light cardinal-red, with large white throat. A very attractive combination	1.00	7.50	65.00
Coral Gem —Prim.—Bright coral red to straw yellow, carmine blotch in throat	1.00	7.00	60.00
Cracker Jack —Lem. Cowee—Dark red, throat spotted with yellow and maroon	.50	2.75	20.00

GLADIOLI—Continued

Crimson Glow —Ch. Betscher—A perfect scarlet of a deep tone. Very large open flowers of the finest form and exceedingly well placed on a tall spike60	4.00	35.00
Crystal White —Gand.—Very tall spike, flowers white with faint marking—	.50	3.00	25.00
Cynosure —Ch. Miller—Immense flowers of exquisite deep rose-pink, marked on the lower petals with a throat blotch of crimson-lake; tall, sturdy, well-filled spike—	1.50	10.00
Dawn — Groff. — Strong, vigorous grower. Flowers salmon shading to very light; claret stain in throat. Extra fine.....	1.00	8.00	12.75
Desert Sunrise — Prim. — Pale lemon-yellow with a lighter line running through petals. The whole flower suffused with burnt orange, slightly ruffled	1.00	7.00	60.00
Dixie —Kund.—Deep rich red, almost black—	1.50	10.00	90.00
Dora Kraus —Rich buff flecked rosy pink, lower petals bearing blotches of carmine on yellow ground. Flowers large, wide open and of graceful form	1.50	10.00
Dorothy Wheeler, Syn of Peach Glow —Shrimp pink overlaid and suffused with peach red; good large flowers on a good spike—	.50	3.35	30.00
Dorrit —A valuable lavender variety. Makes a tall, perfect spike. Large, refined lavender flowers, many open at a time.....	1.75	12.50
Dryade —Close spike with very large flowers of fleshy rose color, slightly striped at the edges of the petals. Very soft color—	2.00	15.00
Early Sunrise — Red, salmon-yellow throat, very large, one of the earliest	.75	5.00	45.00
E. J. Shaylor —Tall, very strong plant, large blooms. Beautiful clear deep rose pink—	.50	3.75	30.00
Eldorado —Deepest of the yellows. Maroon spots, long spike90	6.00	50.00
Elizabeth Tabor —Pink with dark red blotch in throat, large	1.25	9.00	80.00
Elora —Creamy white with rich cream spots in throat, overlaid with dainty featherings of American Beauty pink. Early—	.75	5.00	45.00
Empress of India —Velthuys—Rich dark maroon, almost black. A rare color—	.90	6.00	50.00
Etendard —Upper petals rich cream tinted rose, lower petals marked with large fiery red blotches, clearly margined with bright yellow. An exceedingly rich combination—	1.00	7.00	60.00

GLADIOLI—Continued

Eucharis—Gand. —Large well-opened flowers on long spikes, of a delicate blush-white, blotched slightly deeper; a charming, dainty coloring	3.00	20.00	
Evelyn Kirtland—Austin —The flowers of strong substance, are beautiful shade of rosy pink, darker at the edges, fading to shell-pink at the center with brilliant scarlet blotches on lower petals; the entire flower showing a glistening, sparkling lustre. Very tall spike. Extra fine form and color.	.60	4.00	35.00
Fay Lanphier—Coral lustre with cerise blending	1.25	9.00	80.00
Fire King—Ch. Childs —Long, graceful spikes, showing half a dozen immense blooms open at the same time. Color, intense fire-scarlet50	3.75	30.00
Flaming Sword —Brilliant red slightly overlaid with orange. Tall straight spike with ten or more flowers open at a time—	.90	6.00	50.00
Flora —Fine golden yellow. Very large flowers. Strong grower75	5.00	45.00
Flowerfield Gem —Light yellow with crimson blotch. Large flower and strong growth—	.90	6.00	50.00
F. L. Oakley—Ch. Childs —Bright salmon-scarlet, with a pure white center. Very fine, showy variety50	3.50	30.00
Frank J. Symmes —Heavily ruffled peach red with the three lower petals shading into a flame color and finally into a deep crimson. Lip has small spots of silver near the throat.	1.00	7.50	
George Paul—Nanc. V. Lemoine —Deep crimson, striped yellow, spotted purple—	1.00	7.00	60.00
Gen. Pershing —Large pale pink	2.00	15.00	
Geo. B. Remsen—Ch. Childs —Bright crimson and white freely intermixed.....	.60	4.00	35.00
Geralda—Gand. Childs —Deep bright rose, with conspicuous white ribs and throat, beautiful spike, beautiful flower and superb color—	.60	4.00	35.00
Giant White—Kund. —An extra large white of great size and substance. Pure white with slight marking on lower petals—	1.00	7.00	60.00
Gladys—Pr. —Shrimp pink blending to strawberry pink on outer edges. Light carmine stripe in throat40	2.50	20.00
Glory—Ruffled-Kunderd —Each flower petal is exquisitely ruffled and fluted. Stalks very robust and produce from eight to twelve massive beautiful flowers, which expand wide open and are delicate cream-pink with a neat crimson stripe90	6.00	50.00

GLADIOLI—Continued

Gold Drop —Pr.—An extra pure deep yellow with red lines on petals. Beautifully ruffled90	6.00	50.00
Golden Gate —Prim. Kund.—Large showy yellow, ruffled. Tall and vigorous70	4.50	40.00
Golden Glow —Prim.—Pure deep yellow with beautiful red line on petals. Beautifully ruffled75	5.00	40.00
Golden Measure —Extra fine dark yellow, the best of its color	1.00	7.00	60.00
Golden Princess —A seedling from Golden King by Primulinus. Large and of the clearest golden yellow ..	3.50	25.00
Golden Wedding —Prim.—Light orange-yellow, suffused with bitter-sweet pink—	.40	2.50	20.00
Gretchen Zang —Austin—The blooms are of pink, blending into scarlet on lower petals. The color everyone wants.....	.50	3.00	25.00
Halley —Lem.—The predominating color is delicate salmon-pink, with a slight roseate tinge30	3.00	25.00
Herada —Blooms of immense size on tall straight spikes. Massive in every way. The large blooms are pure mauve, glistening and clear, with deeper markings in throat—	.60	4.00	35.00
Ida Van —A beautiful deep salmon-red, or flaming orange-pink. Very rich color—	.50	3.00	25.00
I. S. Hendrickson —Ch.—White, mottled with bright pink; very large90	6.00	50.00
Jack London —Light salmon striped vermilion, throat canary yellow, with ruby stripes. Fine cut flower	1.50	10.00
Jewell —Wonderful color of clear salmon pink with golden throat, without markings. Tall, erect, early flowering. Fine forcer—	.90	6.00	50.00
Joe Coleman —Rich red. Large and vigorous. Fine75	5.00	45.00
June —The color is white with a mottling of pink and varies more or less in every spike, but always in a most pleasing way—	1.00	7.00	60.00
K.'s M. Foch —Kund.—Fine salmon-pink. Giant flowers on long spikes....	1.50	10.00
Klondyke —Lem. Christy—Light yellow, crimson-maroon blotch40	2.50	20.00
Large Cream —Fine shade soft buff with rose pencilings	1.50	10.00
Laurain —Ch. Childs—Lovely flesh-tinted white, with brilliant carmine center. Beautiful large flower and spike which is very compact	1.00	8.00	75.00

GLADIOLI—Continued			
Lavender Princess —Delicate lavender with cerise throat	1.50	10.00	90.00
Le Marechal Foch —Light pink; extra large flower40	2.50	20.00
Lene Graetz —Pure white, faint lilac lines—	1.00	8.00	75.00
Lily White —Gand. Kund.—A fine snow-white of good height; good size blossoms, six or seven open at a time.....	.50	3.50	30.00
L'Immaculee —Gand.—Pure white; medium size flowers, good florists' variety—	.75	5.00	45.00
Los Angeles —Shrimp pink tinted orange with orange tinted carmine throat	3.50	25.00
Louise —Exquisite shade of bright lavender, growing brighter toward center	.90	6.00	50.00
Loveliness —A beautiful cream colored variety of good form and substance.....	1.00	7.50	65.00
Lustrous —Ch. Miller—Large flowers of lovely orange-rose; lower petals have a large throat blotch of yellow, slightly shot with purplish lake; growth, stocky and branching60	4.00	35.00
Maculata —Pr.—Yellow with brown spot in throat60	4.00	35.00
Maiden's Blush —Pr.—Delicate dainty blush pink50	3.00	25.00
Mary Pickford —An extraordinary flower and spike of most delicate creamy white. Throat finest soft sulphur yellow. Stem and Calix also white60	4.00	35.00
Ming Toy —Prim.—Very large flower of finest form. Tall plant, showy deep buff, yellow throat	1.00	7.00	60.00
Ministre Pichon —Flower bright carmine-red; the lower petals bear a white stain, penciled and stained with crimson	2.00	15.00
Miss Helen Franklin —Pure white with violet stripes on lower petals; deeply ruffled—	.60	4.00	35.00
Morning Light —Gand.—La France pink, edged begonia rose, dusted brown—	.90	6.00	50.00
Mr. B. Verlot —Gand. Vil.—Dense spike, flowers of a dark-reddish lilac; a white band on the middle of each petal and a straw-colored blotch on the lower petals	2.00	15.00
Mrs. A. E. Kunderd —Large flowered tall, superbly formed, white with a slight tint of bluish pink. A truly magnificent white—	3.00	20.00
Mrs. Dr. Norton —A pure soft white with tips of petals suffused La France pink—	.75	5.00	40.00

GLADIOLI—Continued

Mrs. F. C. Peters — Beautiful shade of rose lilac with crimson blotch bordered white on lower segments, resembling an orchid in color. Flowers of large size and many open at a time on a strong stem. Very choice—	1.25	8.00	70.00
Mrs. Frances King — Nanc. Coblentz — Light scarlet of pleasing shade.....	.50	3.50	30.00
Mrs. Frank Pendleton — Lem. Kund. — The flowers are very large and well expanded, of a lovely flushed salmon-pink with brilliant carmine, or deep blood-red blotches in the throat, presenting a vivid contrast of orchid-like attractiveness60	4.00	35.00
Mrs. H. E. Bothin —Flesh salmon pink, flame scarlet center, heavy ruffled.....	.90	6.00	50.00
Mrs. Laura S. Schweppe — Beautiful deep peach blossom with velvety rose red blotches	3.50	25.00
Mrs. Leon Douglas — Begonia rose striped flame and scarlet, lip pale lemon speckled with ruby	3.50	25.00
Mrs. W. E. Fryer — Fine large scarlet, tall grower; wide open flowers.....	1.25	9.00	80.00
Mrs. Watt —A clear wine-red of most pleasing color50	3.50	30.00
Myra —Pr.—New giant flowered Primulinus Hybrid, deep salmon over yellow ground; yellow throat, pink lines. Tall slender stem. Exquisitely showy50	3.50	25.00
Niagara —Ch. Banning—In color the flowers are a delightful cream shade with the two lower petals or segments blending to canary-yellow. The throat is splashed with carmine, and the lower ends of the outside petals are also blushed with carmine—	.60	4.00	35.00
Nora —Light violet blue. Very dainty—	.90	6.00	50.00
Northern Light —Gand. Childs—Blush white, flecked lake pink, large carmine blotch dusted and edged with pale yellow—	.90	6.00	50.00
Odin —Dark salmon pink, intense carmine blotch75	5.00	40.00
Opaline —Pure rosy crimson flowers, four inches across; flaked most beautifully silvery violet-pink; throat shaded and dotted crimson and gold	2.00	11.00	100.00
Orange Brilliant —Brilliant orange—	.50	3.50	30.00
Orange Glory —Grand orange colored, with lighter throat. Very rich and striking color. Beautiful and distinct75	5.00	45.00

GLADIOLI—Continued

Panama —Ch. Banning—A seedling of America which resembles the parent variety in every way except that it is a much deeper pink40	3.00	25.00
Peace —Gand. Groff.—Flowers are large, of good form, correctly placed on a heavy, straight spike. Beautiful white, with pale lilac feathering on interior petals—	.50	3.50	25.00
Peach Rose —Deep rose pink, beautifully ruffled	2.00	15.00	...
Pink Perfection —Bright pink. Very large beautiful flower75	5.00	45.00
Pink Wonder —Color is a shade lighter than Panama yellow, shading at base of petals overlaid with rose feathering .90	6.00	50.00	
Premiere —Creamy white with crimson blotch; very early75	5.00	40.00
Prima Donna —Prim.—Yellow like a butterfly	1.50	10.00	
Primunella —Prim.—Softest shades of orange and yellow	1.25	9.00	..
Princepine —Carmine red with large white blotch; tall spike50	3.50	30.00
Prince of India —Ch. Childs—Color varies from light to deep smoky gray, many of the petals being zoned and banded and freely penciled with dark slaty blue mottled with white. A most remarkable mixture of colors and one of the greatest oddity and beauty	3.50	25.00	
Prince of Wales —Beautiful light salmon with orange shade; very early60	4.00	35.00
Princes —Ch. Vaughan—Rich crimson with very deep shadings in throat, with magnificent large white blotches on lower petal—	.90	6.00	50.00
Princess Altieri —Almost pure white; crimson blotch	1.00	7.50
Purple Glory —Deep velvety maroon red with almost black blotches. Ruffled	1.50	9.50	85.00
Queen Victoria —Prim.—Glittering bright petals, throat silvery rose, flowers large and wonderfully shaped. Large.....	.60	4.00	35.00
Queen of Whites —Very large, glistening, pure white flowers. A magnificent spike of blooms of wonderful texture	1.50	10.00	..
Radiance —Ch. Miller—A grand, big pink; immense flowers of a charming tone of rose-pink, slightly flamed with deeper lake-pink, splendidly filled "stand-up" spike—	1.50	10.00	90.00
Rareray —Ch. Childs—Large wide-spreading flower of a rare bright lilac pink, with carmine flaked throat. It is a very rare and beautiful and desirable shade of color—	1.50	10.00	90.00

GLADIOLI—Continued

Remembrance — Kund. — Geranium pink to rose doree at outer petals with throat blotched pomegranate purple. Slightly ruffled90	6.00	50.00
Rev. Ewbank—Fine porcelain blue—	1.50	10.00	90.00
Rose 1910—Pure rose-pink of extra fine shade; narrow white line through center of lower petals50	3.50	25.00
Rose Ash—Medium old rose, lower petals canary yellow sprinkled with spotted old rose. Fluted petals90	6.00	50.00
Rosa Lindt—Violet	1.00	7.00	60.00
Rosella — Lem. Cowee (Syn. Kathryn)—Large, well-opened flowers, light rose, stained purple and white	1.00	7.00	60.00
Rose Pearl—Delicate rosy sport of Halley, just as early, very beautiful.....	.75	5.00	40.00
Rose Precose—Deep pink with slight salmon reflex90	6.00	50.00
Rosy Spray — Ch. Childs — White beautiful sprayed rose. Large and fine.....	.50	3.50	30.00
Rouge Torch—Large white flower with scarlet feather on lower petals.....	.50	3.50	25.00
Rubini—Orange scarlet with clear white eye90	6.00	50.00
Ruby King—Ch. Childs—Fine, compact spike, tall and graceful, flowers of great substance and of an intense dark ruby-red, glowing with a peculiar richness—	.75	5.00	45.00
Salmon Beauty — Prim. — Deep salmon with rich salmon-yellow throat; very large flower; fills the need for a sterling-yellow variety75	5.00	45.00
Salmon Flame—Prim.—Salmon, suffused and flamed strawberry-pink on edges and outside petals. Carmine blotch in throat—	.90	6.00	50.00
Salmon Queen — Geranium pink carmine blotch in throat90	6.00	50.00
Scarlet Princeps — Strong vigorous grower with wonderful spikes, with six or more blossoms open at a time. Brilliant scarlet, deeper in throat60	4.00	35.00
Scarlet Wonder—Four to five feet high with broad, stalky dark green foliage and compact truss of great, rich velvety scarlet, fiery crimson flowers	1.50	10.00	90.00
Scarsdale—Lem. Cowee—Tall grower, with large pink lavender colored flowers, shaded to dark rose75	5.00	45.00
Schwaben—Pfitzer—D e l i c a t e pale-yellow, dark blotch in center50	3.00	25.00

GLADIOLI—Continued

Scribe —Ch. Childs—A beautiful, large, well-opened flower and an enormous spike. Color like the fine old Eugene Scribe, tinted white, freely striped carmine50	3.50	30.00
Shedowa — Ch. Childs — Soft, delicate pink flower, exquisitely marked and mottled in center. Enormous spikes and large, wide-spreading flower of perfect form—	1.00	8.00	75.00
Sidney Plummer —Soft yellow suffused delicate pink. Rich amber lip. Amaranth purple tongue90	6.00	50.00
Snowbank —White, red stain at base of petals50	3.50	30.00
Snowbird —An exceptionally pure white, with pale lilac lines on the interior petals—	.50	3.50	30.00
Snow Boy —Tall, stately pure white. Many flowers open at a time. Large flower of finest form	1.00	8.00	75.00
Snow King —Gand. Childs—A very white variety similar in habit to Augusta, but remains white in all kinds of weather—	.50	3.50	30.00
Southampton Beauty —Pure rose doree color with a purple blotch in throat that is overlaid with white75	5.00	40.00
Souvenir —Prim.—Fine pure yellow. Intense clear color of the buttercup. Straight spikes75	5.00	40.00
Sulphur King —Gand. Childs—This is by all odds the most valuable yellow variety ever introduced. It produces a very long spike of the clearest sulphur-yellow flowers yet seen in any Gladiolus75	5.00	40.00
Summer Beauty —Kund.—A very choice and distinct pink. Very tall and showy—	.75	5.00	45.00
Sunbeam —Prim.—Pure yellow, long spikes of well formed flowers60	4.00	35.00
Sunset Glow —Prim. Childs—Strawberry-pink, shading to scarlet toward the edge of petals. Yellow throat with carmine stripes—	.60	4.00	30.00
Superb —Ch. Childs—Enormous flower and spike, one of the largest; flaked and striped with salmon pink75	5.00	40.00
Sweet Lavender —Blend of lavender and true pink with blotches of ruby red faintly bordered lemon yellow	1.50	10.00
The Pearl —Clear soft pink, fine for forcing	2.00	15.00
Twilight —Cream white	1.25	9.00	80.00
Twotint — Ch. Childs — Delicate flesh-pink shaded white and tinted yellow inside with large salmon-tinted scarlet blotches. A lovely combination of delicate colors—	1.00	7.00	60.00

GLADIOLI—Continued

Velvet King —Dark scarlet.....	.90	6.00	50.00
Venus —Very lovely flower, creamy white. One of the best for cut flowers	1.00	6.50	55.00
Vernon G. Childs —Prim.—Light orange yellow, tipped strawberry pink. Pale lemon throat	1.25	9.00	25.00
Vesta Tilley —(Krelage)—Delicate blush pink with a small violet blotch. Large firm flowers	1.50	10.00
Viola —Lem. Miller—A very large Lemoinei type flower of exquisite mauve-blue, gradually shading deeper to rich violet at the edges, throat toned soft canary with purple-garnet blotch zoned yellow in lower petals—	1.00	7.00	60.00
Violet Beauty —Tall, large, cerise violet, grand red throat blotches. Beautiful—	2.00	15.00
White America —Color, bud is flesh-white, opening a clear white with slight marks of blue in throat50	3.50	30.00
White Glory —Ruff. Kund.—The ground color is a clear solid white and the lower petals have a distinct Iris-blue marking of same form where Kunderdi Glory is marked with red. The general appearance is very Iris-like90	6.00	50.00
White King —Kund.—As tall as Kunderdi Glory, very rich sulphur-white, splendidly ruffled, and nicely marked on lower petals—	.60	4.00	35.00
Wilbrink —Flesh pink, creamy blotch on lower petals; very early50	3.00	25.00
Wild Rose —Ch. Childs—Color very bright rose or blush tint, exceedingly delicate and pretty, and needs only to be seen to be appreciated. In its particular color it stands alone90	6.00
Yellow Hammer —Pure yellow with little red mark in the throat75	5.00	45.00

Gladioli in Mixtures

Our Guaranty

We are so very anxious to give our customers satisfaction, and we are so very sure that we have satisfactory goods, that we stand ready to replace anything that, through any fault of ours, does not prove to be as represented.

Blue Hybrids Seedlings —This mixture is the result of sowing seeds of the best blue shades obtainable and the variation of colors is beyond description.....	.75	5.00	45.00
Childsi Mixed —First quality. Extra large and fine flowers. Contains many named varieties and beautiful seedlings.....	.50	3.00	25.00

Mixtures Under Separate Colors

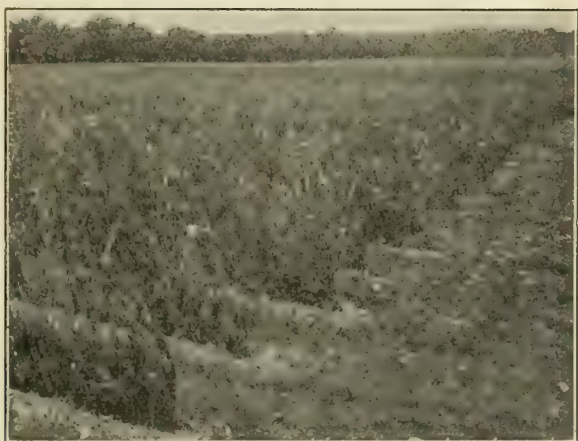
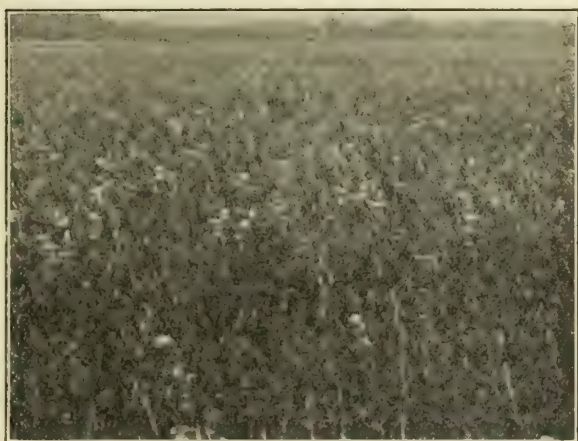
Scarlet and Red —Extra fine scarlet and red—	.50	3.00	25.00
Pink —Fine pink and rose shades	.50	3.00	25.00
Yellow and Orange —Best yellow colors—	.50	3.00	25.00
Striped and Variegated —Extra fine—	.50	3.00	25.00

Special Mixtures

Popular Mixed —This is the mixture for the trade that requires something cheap yet good. It is ideal for "Store Sales from the Counter." Bulbs are large, well graded and the assortment of colors is the best obtainable for the money40	2.50	20.00
--	-----	------	-------

"Primulinus Hybrids"

Colors range from sulphur-yellow to chrome-yellow, all shades of orange with now and then a cream and pink among them, but Nasturtium colors predominate—	.40	2.50	20.00
Primulinus Hybrids —Second size, per 1,000			10.00



**Have You Ever Seen a Better Stand From Bulblets—
Our Fields.**

Photos Taken August 1, 1928.

Cannas

Our Cannas are famous for their sterling qualities. They have "eyes to see." We clean and pack the roots at the time of shipping.

The following are among the very best improved flowering Cannas, and will give great satisfaction.

Prices quoted are per dozen, per 100 and per 1,000 in the order given.

Alsace —Pale sulphur, changing to cream white. Green foliage, 4 feet.....	.60	4.00	35.00
American Beauty —Oriental carmine or cerise. Green foliage, 5 feet90	6.00	50.00
Apricot —Buff-yellow base, overspread with salmon pink90	6.00	50.00
Beacon —Moderate sized flowers borne in great heads of rich cardinal red	.60	4.00	35.00
Brandywine —A healthy, vigorous grower of four to five feet. Makes luxuriant growth of dark bronze foliage and a magnificent display of fine large flowers. Color is intense vinous red, beautifully dappled with deep crimson60	4.00	35.00
Chas. Henderson —Crimson; compact trusses; very free bloomer, leaves green. 3½—	.50	3.50	30.00
Cheerfulness —Its beautiful bright fire-red or deep orange flowers appear early and continue without interruption until frost—	.90	6.00	50.00
Egandale —A fine, bronze-leaved variety; cherry-red flowers, borne well above the foliage; handsome. Four feet50	3.50	30.00
Fiery Cross —Very large flower heads of vivid scarlet shading to crimson; foliage lustrous blue-green. Five feet75	5.00	40.00
Gaiety —Reddish orange, mottled with carmine and edged with yellow. The tongue is yellow and densely spotted with carmine—	.50	3.50	30.00
Gladioflora —Remarkable on account of the unusual shape of its flowers, which look like a Gladiolus; color, crimson changing to carmine-rose, with an irregular edge of gold. Four feet50	3.50	30.00
Louisiana — Orchid-flowered. Very large trusses of vivid scarlet flowers; free bloomer50	3.50	30.00
Morning Glow —Foliage an olive-green striped and veined with brown. Flowers soft shell pink and orange-red center. Four feet—	.90	6.00	50.00

CANNAS—Continued

Orange Bedder —This is a particularly useful and attractive bedding variety, of a bright orange with just enough scarlet suffusion to intensify the dazzling mass of color. Four feet60	4.00	35.00
Panama —The color of this splendid Canna is unusual, being an attractive rich orange-red with a well-defined edge of bright golden yellow. The flowers are very large, the petals being almost round and the immense spread of the individual blooms, coupled with the early, free-flowering habit and unique colorings make this Canna most noteworthy. Three feet50	3.50	30.00
San Diego —Persian yellow, with crimped petals. Four feet75	5.00	40.00
The President —A gorgeous variety producing great trusses of bright red flowers in great profusion75	5.00	40.00
Wintzer's Colossal —Five feet. Without doubt the largest-flowered Canna to date, as the average flowers almost cover a man's hat. The color is a strikingly vivid scarlet that retains its brilliancy60	4.00	35.00
Cannas, under color50	3.50	30.00
Cannas, mixed colors50	3.00	25.00



A Field of Childs' Famous Cannas.

Dahlias

Our list is made to cover the different colors and classes. We supply divisions of field-grown roots.

Prices quoted are per 100

Alewine—Pomp.—Pink tinted lilac.....	\$10.00
Alight—Cac.—Orange scarlet, large	20.00
Alta—Cac.—Reddish terra cotta	10.00
Ambassador—H.C.—Yellow buff	40.00
Amber Glow—Cac.—Bright yellow, immense size	10.00
Amber Queen—Pomp.—Amber to apricot....	10.00
Ami Nonin—Col.—Old rose white collar.....	10.00
Amityville—P.F.—Silver pink	20.00
Amphion—Dec.—Pink suffused heliotrope....	15.00
Amun Ra—Dec.—Copper and orange to gold and amber	40.00
Anna Maxwell Jones	25.00
Arthur Kelsey—H.C.—Purplish crimson	18.00
Attraction—H.C.—Lilac-rose	25.00
Autumn Prince—H.C.—Autumn shade.....	15.00
Autumn Tints—Col.—Reddish orange.....	10.00
Avalanche—P. F.—Pure white	20.00
Avalon—Dec.—Pure yellow	30.00
Azalea—Dec.—Yellow, tinged red	20.00
Ballet Girl—Cac.—Orange, white edge.....	20.00
Beatrice Slocombe—Dec.—Red and gold.....	20.00
Beauty of Rosemont—Dec.—Rosy pink to buff	18.00
Bessie Boston—Dec.—Scarlet	20.00
Bianca—H.C.—Pink to lavender	20.00
Blossom—P.F.—White and faint pink.....	15.00
Bowen Tufts—Cac.—Bright orange.....	15.00
Break O'Day—H.C.—Clear sulphur-yellow....	15.00
Bride's Bouquet—Cac.—Purest white	15.00
Cadiz—Dec.—Reddish orange	35.00
Cambria—Dec.—Pink-white center, massive....	25.00
Capt. John—Dec.—Yellow and buff	40.00
Carl Purdy—P.F.—Scarlet	20.00
Carmen Sylvia—Dec.—Beautiful salmon.....	18.00
Challenge—Dec.—Bronze-red and yellow.....	18.00
Chipeta—H.C.—Rich amaranth red	18.00
Clyde Fischer	25.00
Comstock—Dec.—Pure yellow	18.00
Copper—Dec.—Copper shading to brown.....	18.00
Cordova—H.C.—Pale lavender	20.00
Daffodil—Col.—Clear yellow	10.00
Daisy—Pomp.—Amber salmon	10.00
Dakota—Dec.—Flame color	18.00
Darlene—Dec.—Live shell pink	18.00
David Warfield—Show—Cherry red	18.00
Daybreak—Pomp.—Rosy pink	20.00
Deelighted—Show—Snow white, immense.....	20.00
Denison—Cac.—Pure rosy pink.....	18.00
Diana—H.C.—Crimson, violet reflection.....	15.00
Dorothy Flint—Dec.—Blending of salmon and pink	15.00

DAHLIAS—Continued

Dr. H. L. Tevis—Dec.—Salmon-rose to old gold	15.00
Edith Carter—Cac.—Yellow suffused carmine	15.00
Edith Cavell—H.C.—Orange suffused with gold	20.00
Elsie Burgess—Show white tipped lavender.....	12.00
Elizabeth Slocombe—Rec.—Rich garnet.....	18.00
Etendard de Lyon—H.C. Carmine rose.....	15.00
Eventide—Dec.—White flushed rose.....	12.00
Extase—Cac.—White edged pure mauve.....	12.00
Fireburst—Dec. Intense scarlet shaded orange-red	12.00
Flamingo	15.00
Flowerfield Beauty	25.00
Francis Burns—Dec.—Pink shading to white center	15.00
Francis Butts—Dec.—Flesh white edged lavender	12.00
Francis Martin—Dec.—White overlaid lavender	18.00
Frank A. Walker—Dec.—Deep lavender pink	15.00
Gen'l J. B. Seth—H.C.—Brilliant scarlet to orange scarlet	15.00
Gen'l Miles—Show—Light violet	20.00
Gen'l Pershing—H.C.—Bright shade light carmine	25.00
George Walters — H.C. — Pink, immense blooms	15.00
Gloria—Pomp.—Maroon and white	10.00
Glory of Argonne—Show—Pink and white.....	18.00
Glory of Nikerk—P.F.—Cerise to purple violet	20.00
Glow—Pomp.—Old rose to coral	10.00
Golden Glow—Dec.—Golden apricot	20.00
Golden Opportunity — Dec. — Buttercup yellow	20.00
Gretchen Heine — Pomp. — Blush white rose tips	10.00
Gruss Aus Wien — Pomp. — Crushed strawberry, one of the best	10.00
Guardian—Cac.—Crimson scarlet	15.00
Guiding Star—Pomp.—Best known white.....	10.00
Harry Davidson—Dec.—Mulberry, tipped gold	15.00
Harry Snook—Dec.—Mulberry tipped gold, yellow center	10.00
Helen Durnbaugh—H.C.—Delicate blush.....	18.00
Hercules—Dec.—Tangerine and deep yellow	30.00
Hesperia—Pomp.—Deep yellow to lighter shade	10.00
H. H. Thomas—Cac.—Deep crimson.....	15.00
Immense—Dec.—White overlaid crimson lake	18.00
Jane Selby—Dec.—Lovely shade of pink.....	25.00
Jean Wood—Dec.—Silvery rose	18.00
Jersey's King—Dec.—Carmine, very large.....	20.00
Jessica—Pomp.—Yellow edged red	10.00
J. Herbert Alexander—Cac.—Golden yellow to salmon pink	30.00
J. H. Slocombe—Dec.—Intense deep red. Gorgeous	20.00

DAHLIAS—Continued

John Lewis Childs—Dec.—Yellow, splashed and striped scarlet	15.00
Judge Marean—Dec.—Orange-yellow and gold	30.00
Kalif—H.C.—Pure scarlet, immense	20.00
Katherine Kernan—Hy. Show—White and pink	20.00
King Albert—Dec.—Dark violet, monster size	20.00
King of Commerce—Dec.—Old gold and orange	20.00
King of Shows—Show—Butter yellow	20.00
Kittie Dunlap—Dec.—Rose color, immense.....	20.00
Latonia—Dec.—Buff yellow	15.00
Laura Barnes—P.F.—Orange red	15.00
Leader—Pomp.—Yellow, tipped rose purple	10.00
Le Grand Manitou—Dec.—Splashed purple on deep rose	15.00
Liberty—P.F.—Coral red	20.00
Little Jennie—Pomp.—Primrose yellow.....	10.00
Lorna Doone—Cac.—Yellow tipped carmine	18.00
Lucero—Dec.—Bronze buff	15.00
Madeline—Pomp.—Primrose, edged purple.....	10.00
Malcom Richardson—Cac.—Salmon and primrose, immense	18.00
Margaret Saltus—Show—Soft pink	15.00
Marjorie Field—Dec.—Pink, immense	18.00
Martha Lowei—Show—Old rose	20.00
Maude Adams—Show—White overlaid delicate pink	10.00
Midget—Pomp. Salmon shaded peach.....	10.00
Millie Rogers—Dec.—Old gold shading to amber	25.00
Millionaire—Dec.—Lavender with pink cast....	20.00
Minnie Baxter—H.C.—Dark maroon	12.00
Mme. Bijstein—P. F.—Lilac or mauve.....	15.00
Morning Star—P.F.—Cherry red	18.00
Mother—Dec.—Rose and gold, flushed lilac....	15.00
Mount Blanc—Dec.—Fine large white.....	15.00
Mount Hood—Dec.—Pure waxy white.....	15.00
Mrs. A. C. James—Cac.—Fine salmon pink.....	30.00
Mrs. C. Cooper—Cac.—Brownish tan	20.00
Mrs. C. H. Breck—Dec.—Soft yellow suffused carmine	20.00
Mrs. Carl Salbach—Dec.—Lavender pink.....	20.00
Mrs. E. C. Boston—Dec.—Fine white	25.00
Mrs. Edna Spencer—Cac.—Delicate orchid pink	20.00
Mrs. Ethel Smith—Dec.—Mulberry suffused with gold	25.00
Mrs. Hugo Kind—Dec.—Velvet red	25.00
Mrs. I. de Ver Warner—Dec.—Refined deep mauve-pink	20.00
Mrs. I. S. Hendrickson—H.C.—Broad petals, fine shade of red, tipped white	10.00
Mrs. J. P. Smith—Show—Rich red shaded cherry	15.00
Mrs. Roosevelt—Show—Pink, immense	20.00
Mrs. R. R. Strange—Dec.—Burnished copper to old rose	15.00
Mrs. T. A. Munro—Cac.—Amber to old gold	15.00

DAHLIAS—Continued

Mrs. W. E. Estes—H.C.—Pure white	15.00
Mrs. Warnaar—H.C.—White, blending with pink. One of the largest whites.....	20.00
My Lady—P.F.—Red to faint cerise	20.00
Negerprins—Pomp.—Blackish-maroon	10.00
Nerissa—Pomp.—Soft pink tinted silver.....	10.00
Niagara—P.F.—Lovely old shade of red.....	18.00
No. 13—Dec.—Similar to Millionaire	20.00
Norma Dee Childs—Dec.—Pink with yellow reflex	15.00
Oneonta—Dec.—Rosy pink	20.00
Orange King—Dec.—Blending of yellow and orange	18.00
Oregon Beauty—Dec.—Intense red, golden sheen	10.00
Pacific Glow—P.F.—Pink, extra large	25.00
Papillion—Cac.—Old rose with golden lights	25.00
Patriot—Cac.—Scarlet, large	25.00
Penataquit—Dec. Beautiful bronze, new.....	25.00
Perfect Beauty—Dec.—Light scarlet tipped white	25.00
Perle De Lyon—H.C.—Pure white	12.00
Peter Pan—Dec.—Rose pink	20.00
Pierson Durbrow—Col.—Mahogany-red, golden collar	15.00
Pink Madonna—Dec.—Extra fine	20.00
Polar Bear—P.F.—Pure white	18.00
Pride of California—Dec.—Rich crimson.....	20.00
Prima Donna—Cac.—Delicate ivory white to violet	15.00
Primrose Dame—H.C.—Primrose yellow overlaid coral pink	15.00
Princess—Dec. Orange scarlet	15.00
Princess Juliana—Dec.—Pure white	12.00
Princess Mary—P.F.—Vivid light pink.....	12.00
Promethius—H.C.—Golden fawn	25.00
Purity—Dec.—Large, pure white	12.00
Queen Elizabeth—P.F.—Rosy mauve	15.00
Queen Mary—Dec.—Rose-pink	12.00
Rapiere—Cac.—Old gold or bronze	10.00
Roman Eagle—Dec.—Orange striped and speckled carmine	35.00
Rosa Nell—Dec.—Clear bright rose	25.00
Rose Fallon—Dec.—Deep old gold	50.00
Rosemawr—Dec.—Rich rose pink	20.00
Royalist—H.C.—Cerise	25.00
Rumson—Dec.—Soft apricot	15.00
Rupert—Cac.—Yellow suffused apricot.....	10.00
Ruth Gleadell—Cac.—Soft yellow to pink.....	20.00
Santa Cruz—Dec.—Lemon yellow over shaded salmon pink	20.00
San Toy—Pomp.—White tipped carmine.....	10.00
Scaramouche—H.C.—Red	25.00
Scottish Chief—Dec.—Amber	20.00
Seahorse—H.C.—Golden yellow, white tips..	20.00
Sequoia Gigantea—Dec.—Large yellow.....	20.00
Shasta—Dec.—Very fine large white.....	15.00
Shelikoff—Dec.—Garnet	20.00
Simplicity—Cac.—Soft lilac rose	15.00

DAHLIAS—Continued

Snowclad—Pomp.—Pure white	10.00
Snowdrift—Dec.—Giant white, deep flower.....	25.00
Souv. De Chabanne—Col.—Yellow suffused scarlet	12.00
Star of the Sea—H.C.—Purest white	20.00
Sterna—H.C.—Pale sulphur color	12.00
Sunshine—Pomp.	10.00
Sylvia—Dec.—Deep pink to flesh pink..	10.00
T. A. Burns—H.C.—Pure pink	20.00
Tango—P.F.—Salmon color	15.00
Tekla—P.F.—Bright cardinal	12.00
The Eagle—H.C.—Sulphur yellow ..	15.00
The Grizzley—Dec.—Dark maroon ..	25.00
The Magic Flower of Oz—Dec.—Copper yel- low	12.00
The Marksman—Col.—Light ground splashed crimson	12.00
Tommy Atkins—Dec.—Golden scarlet.....	25.00
Tropic Bird—Sgl.—Old gold, copper bronze	12.00
Vera Curry—Show—Cream pink, a giant.....	12.00
Virginia—Dec.—Lavender pink	15.00
W. D'Arcy Ryan—Dec.—Violet purple tipped white	12.00
Williamsoni—Cac.—Blood orange red	12.00
Winifred—P.F.—Yellow	15.00
Yellow King—H.C.—Yellow shading light.....	20.00

Iris

BEARDED OR FLEUR-DE-LIS

These Irises form a most delightful group of flowers, as they are about the first of the perennials to bloom, and the colors range to all shades of the rainbow. Bloom in May and June.

Numerals after name indicate rating.

	Per Doz.	Per 100	Per 1000
Afterglow 8.6—A soft pink or buff gray, shading to a rich yellow through center—	3.50	25.00	220.00
Albert Victor 7.9—Pal. S. soft blue, F. beautiful lavender, large and fine.....	.50	3.50	30.00
Arlequin Melanais—White and violet blue—	.75	5.00	45.00
Celeste 7.1—Azure blue	1.00	7.00	60.00
Charmant—Silvery blue	1.25	8.00	75.00
Cordelia 7.1—S. Rosy lilac, F. Crimson and rose—	1.30	9.00	80.00
Cottage Maid—S. Silvery blue F. White—	1.00	7.00	60.00
Cypriana Superba 1.7—Blue and crimson—	1.00	7.00	60.00
Darius—S. Canary yellow F. Lilac and white—	2.00	15.00	140.00
Dawn 7.8—Beautiful sulphur-yellow, bronze veined at the throat. Orange beard—	2.00	15.00	140.00
Dr. Bernice 7.4—Sq. S. olive, shaded red. F. dark brown-red60	4.50	40.00
Farrs Pauline—S. and F. Pansy violet—	1.50	10.00	90.00
Florentina Alba—White tinged lilac—	.60	4.50	40.00
Florentina Blue—Dark blue60	4.50	40.00
Fritjof—S. Lavender F. Purple shaded lavender	1.00	7.00	60.00
Halfdan 7.1—Int. Creamy white	.60	4.50	40.00
Hector—S. Yellow F. Crimson black—	.60	4.50	40.00
Her Majesty 7.3—S. Rose pink F. Crimson tinted darker60	4.50	40.00
Innocenza 7.1—Am. S. and F. ivory white, crest rich golden. Very delicate and beautiful, 26 inch90	6.00	50.00
Iris King 7.9—S. Yellow F. Plum edged yellow	2.00	15.00	140.00
Ivoryine 7.3—Ivory white, fine flower, stout texture60	4.50	40.00

IRISES—Continued

Kathleen—S. and F. Soft rose lilac	.60	4.50	40.00
Khedive 6.7—S. beautiful soft lavender. F. white veined brown, deep lavender at tips	.60	4.50	40.00
Kochi 7.8—S. and F. Claret purple—	.60	4.50	40.00
L. A. Williamson 9.6—S. Campanula violet, F. rich royal purple	3.50	25.00	220.00
Leda—S. White dotted rose lilac. F. white—	.90	6.00	50.00
Lohengrin 8.2—S. and F. uniform shade of Cattleya rose, very large	.60	4.50	40.00
Lord of June 9.1—S. lavender blue, F. rich violet blue	5.00	35.00	320.00
Lord Wolseley—Light blue, very late—	1.25	8.00	75.00
Loreley 7.9—S. light yellow, F. ultra-marine blue bordered cream	.60	4.50	40.00
Mandaliscae—Lavender purple	.60	4.50	40.00
Medallion—S. Yellow F. Veined with Indian lake	.90	6.00	50.00
Mme. Chereau 7.4—S. White F. Rose claret—	.75	5.00	45.00
Mithras 7.5—S. Yellow F. Violet and yellow—	.75	5.00	45.00
Monsignor 8.4—S. crimson dotted lavender, inner petals ivory, F. rich crimson edged lavender	.60	4.50	40.00
Mother of Pearl—S. and F. pale bluish lavender with a faint creamy undertone—	5.00	35.00	320.00
Mrs. H. Darwin 6.8—S. White F. Reticulated violet	.90	6.00	50.00
Mrs. Reuthe—S. White and blue grey F. White and soft blue	.75	5.00	45.00
Nibelungen 7.3—S. Olive F. Yellow, purple and white	.60	4.50	40.00
Pallida Speciosa—S. Dark lavender shaded lighter, F. Shaded light purple	.90	6.00	50.00
Parc De Neuilly 8.1—Rich plum purple—	1.25	9.00	80.00
Perle—S. very light lavender, F. deep lavender	.50	4.00	30.00
Perfection 7.8—S. Light blue F. Dark violet	1.00	7.00	60.00
Pocahontas 7.7—F. and S. White bordered pale blue	1.25	9.00	80.00
Princess Victoria Louise 7.2—S. pale yellow, F. rich violet, edged cream	.60	4.50	40.00
Prosper Laugier 8.3—Sq., 30 inches. S. light bronze red. F. velvety ruby purple—	1.25	9.00	80.00

IRISES—Continued

Pumila, The Bride —White, primrose beard—			
	.60	4.50	40.00
Quaker Lady 8.4 —S. smoky lavender with yellow shadings, F. blue and old gold, stigmas yellow. Yellow beard. Odd and attractive60	4.50	40.00
Queen Alexandria 7.5 —S. fawn shot with lilac, F. lilac reticulated at base with bronze, beard yellow60	4.50	40.00
Queen of May 7.4 —Soft rosy lilac	1.25	8.00	70.00
Rhein Nixe 8.4 —Am. Very tall. S. snowy white, F. deep violet blue, white margin. Inner petals stained ivory.....	.75	5.00	45.00
Tendresse —Delicate lavender and lilac—			
	.60	4.50	40.00
Violacea Grandiflora 8.0 —S. rich blue, F. violet-blue. Large75	5.00	45.00

SIBERICA TYPE

Siberica Blue60	4.50	35.00
“ The Emperor60	4.25	35.00
“ Snow Queen60	4.25	35.00



20 Acres of Bearded Irises—20 Acres of Japanese Irises.

New Japanese Irises

Named and Introduced to the Trade 1928

OUR OWN INTRODUCTIONS

	Doz.	100	1000
Alagoz (No. 203) —Dbl. True purple. Inner petals white tipped purple. Large flower	4.00	30.00	270.00
Bokhara (No. 211) —Sgl. Phlox purple, yellow blotch in center edged blue. Wavy petals	4.00	30.00	270.00
Chutsai (No. 209) —Sgl. Hortense violet veined white. Inner petals phlox purple—	4.00	30.00	270.00
Daghasan (No. 195) —Dbl. Rosy-red veined white	4.00	30.00	270.00
Ispahan (No. 208) —Dbl. phlox purple veined white	4.00	30.00	270.00
Kha Khan (No. 167) —Sgl. White suffused blue, purple stigmas. Extra fine and large	4.00	30.00	270.00
Mongol Khan (No. 165) —Sgl. Deep rosy-red. Extra large	4.00	30.00	270.00
Repsime (No. 175) —Dbl. Blue veined white—	4.00	30.00	270.00
Sadarabad (No. 216) —Sgl. White overcast with pale phlox pink	4.00	30.00	270.00
Subotai (No. 188) —Sgl. Rosy-red. Very good	4.00	30.00	270.00
Tartar Prince (No. 80) —Sgl. Rosy-crimson, white veins, blue halo, high stigmas—	4.00	30.00	270.00
Temple Flower (No. 223) —Sgl. Ivory white heavily blended with soft bluish-violet. Veined white. Inner petals white edged phlox pink	4.00	30.00	270.00
Yama Yama (No. 181) —Sgl. White overlaid blue. Center petals white and purple. Crinkled appearance	4.00	30.00	270.00

GENERAL LIST OF Japanese Irises

	Per Doz.	Per 100	Per 1000
Agnes Reed —Sgl. (Seedling No. 84. Falls mulberry purple with halo of royal purple. Standard hematoxin violet shading lighter at base	5.00	35.00	320.00
Amethyst —Sgl. Very large wavy petals exquisite lavender shade	5.00	35.00	320.00
Apollo —Sgl. Pure white, pink center—	3.00	20.00	180.00
Azure —Dbl. Immense flower, exquisitely wavy. Mauve blue with darker halo around the yellow blotch at base of petals—	3.00	20.00	180.00
Beauty —Sgl. Silvery white distinctly veined and suffused indigo blue. Inner petals plum edged white. Very beautiful	3.00	20.00	180.00
Betty Jean Childs —Sgl. (Seedling No. 82) White faintly splashed and veined phlox purple or the new beautiful shade of orchid color; petaloids deeper shade	5.00	35.00	320.00
Blue Jay —Dbl. Sky blue, distinct white lines on each petal	3.50	25.00	220.00
Carlton Childs —Sgl. Ivory white veined plum. Inner petals pink	3.00	20.00	180.00
Catherine Parry —Dbl. (Seedling No. 81) Blue overlaid rosy-red, high tufts in center almost triple	3.00	20.00	180.00
Caroline G. Childs —Sgl. White veined blue violet. Inner petals purple and white—	5.00	35.00	320.00
Choseiden —Dbl. Ruby crimson, white halo surrounds the yellow blotches radiating into broad lines. Petaloid stigmas light violet	3.50	25.00	220.00
Clarice Childs —Sgl. (Seedling No. 26) Petunia violet, conspicuous yellow center surrounded with blue cast. Large.....	5.00	35.00	320.00
Daisy Herrington —Sgl. (Seedling No. 110) Pinkish-blue, veined purple.....	6.00	40.00	360.00
Datedogus —Sgl. Rich claret-red with orange blotches, surrounding same is a halo of blue radiating out into heavy lines. Standards light claret and white. Petaloid stigmas tipped and bordered pale claret. Very large flowers	3.50	25.00	220.00
Della —Sgl. Light to pale wisteria violet—	3.50	25.00	220.00
Doris Childs —Dbl. (seedling No. 43) Pearl white deeply veined rosy plum. Center petals deep plum edged white	4.00	30.00	270.00

IRISES—Continued

Eclair —Dbl. White veined blue, throat amber	3.50	25.00	220.00
Eleanor Parry —Dbl. (Seedling No. 59) Scarlet red, flamed white and blue. Compact medium size flower. Good.....	3.50	25.00	220.00
Ethel J. Marshall —Sgl. (Seedling No. 190) Ivory white splashed and veined dull violet blue petaloids aconite violet edged white, stigmas ivory white and splashed with violet cast	5.00	35.00	320.00
Fanny Hamlet Childs —Dbl. (Seedling No. 201) Violet purple, mottled and splashed white	3.50	25.00	220.00
Fascination —Dbl. (Seedling No. 46) Blue lightly veined white, pink tinge	3.50	25.00	220.00
Frances E. Cleveland —Semi-Dbl. (Seedling No. 56) Blue, very large.....	4.00	30.00	270.00
Gekka No Nami —Dbl. Pure white with yellow blotches	3.50	25.00	220.00
Gold Bound —Dbl. Pure white, one of the best	2.50	18.00	160.00
Grace Sperling —Sgl. Hortense violet; petaloid stigmas light hortense violet. Very early	3.50	25.00	220.00
Granite —Sgl. Purple, spotted and flaked white. Lilac center	2.00	15.00	140.00
Helen Wells —Sgl. Amethyst violet, inner petals phlox purple	4.00	30.00	270.00
Indo —Sgl. Broad wavy petals of great size. Color dark rich blue only slightly veined. Yellow central blotch unusually bright—	2.00	15.00	140.00
Jeannette Parry —Sgl. (Seedling No. 200) White suffused with lines of bluish violet, petaloid stigmas amethyst violet.....	3.00	20.00	180.00
John Lewis Childs II —Sgl. (Seedling No. 72) White lightly veined blue. High center petals delicate mauve and blue—	6.00	40.00	360.00
Josephine Heywood — Sgl. Seedling No. 172) Blue with purple sheen.....	4.00	30.00	270.00
Kamata —Sgl. New single. Deep blue veined white, very distinct	3.00	20.00	180.00
Kumo No Obi —Dbl. Sky blue. Distinct white lines on each petal.....	3.00	20.00	180.00
Kuro Komo —Dbl. Purple overlaid with dark blue. Yellow blotches, stigmas dark blue bordered purple	3.00	20.00	180.00
La Favorite —Dbl. Large, fine white, freely veined blue, and a rich purple center—	2.50	18.00	160.00
Filla Cox —Dbl. Light blue white veins in center of flower with yellow blotches—	3.00	20.00	180.00
Lucie Marshall —Dbl. (Seedling No. 215) Pansy violet, white veins. Center of flowers white with yellow blotches	5.00	35.00	320.00

IRISES—Continued

Margaret S. Hendrickson —Triple (Seedling No. 179) Soft bluish violet, large wavy petals. White center with cast of blue radiating therefrom	7.00	50.00
Marjorie Parry —Dbl. (Seedling No. 45) Delicate light mauve, tufted center. Extra fine—	3.50	25.00	220.00
Mars —Sgl. Reddish purple, striped and blotched white	2.50	18.00	160.00
Mrs. George Stumpp —Sgl. White with cast of blue	3.00	20.00	180.00
Mrs. J. Alexander Hayden —Dbl. (Seedling No. 32) White ground edged and shaded pale violet. Stigmas white slightly edged and tipped pale violet	3.00	20.00	180.00
Mt. Hood —Dbl. Light blue shaded darker. Bright orange center	2.00	15.00	140.00
Painted Lady —Sgl. White, center blotched light phlox purple, tufts white, with phlox purple edge	3.00	20.00	180.00
Pyramid —Dbl. Violet purple, veined white in center of each petal.....	1.00	8.00	75.00
Red Riding Hood —Sgl. Fine amaranth veined and suffused white	1.75	12.50	110.00
Rose Anna —Dbl. Ivory white heavy ruby-red veins, conspicuous yellow blotch, stigmas dark plum	2.00	15.00	140.00
Rose H. Scheepers —Dbl. (Seedling No. 78) Mauve gray, overlaid blue.....	5.00	35.00	320.00
Schenley —Dbl. Rose-red, center of flowers overlaid blue with yellow blotches—	4.00	30.00	270.00
Senjo No Hara —Dbl. Vinous purple speckled and splashed gray, primrose blotches radiating out into sky blue, petaloid stigmas purple stained gray	4.00	30.00	270.00
Shadow —Sgl. Self color, reddish purple—	3.00	20.00	180.00
Taiheraku —Dbl. Rich vinous purple with conspicuous yellow blotches tipped blue, radiating out into purple veins and feathers, petaloid stigmas, gray and lavender—	1.25	8.00	70.00
Templeton —Dbl. Light violet, mottled reddish pink and white, often triple—	4.00	30.00	270.00
Toledo —Sgl. White, light pink center—	3.00	20.00	180.00
Totty's True Blue —Dbl. Dark violet blue—	5.00	35.00	320.00
T. S. Ware —Dbl. Reddish violet veined white. Center white marked lemon—	3.00	20.00	180.00
Violet Beauty —Sgl. Pansy violet, conspicuous yellow blotch in center surrounded with blue cast	3.00	20.00	180.00
Violet Herrington —Dbl. (Seedling No. 220) Bradley's violet, white veins, tufted center. Large. Dwarf	3.50	25.00	220.00

Special Offer

Japanese Irises

Seedlings—Mixed80	5.50	40.00
Dbl. and Sgl. Mixed80	5.50	40.00
5 each of 10 varieties—our choice— plants	50		\$ 6.00
10 each of 10 varieties—our choice— plants	100		10.00
25 each of 10 varieties—our choice— plants	250		30.00
50 each of 10 varieties—our choice— plants	500		40.00
100 each of 10 varieties—our choice— plants	1000		60.00

Can be retailed at from \$3.00 to \$5.00
per set of ten.

All good double and single varieties of our selection. We cannot, however, give names in advance at this special price, as we reserve the right to use varieties on hand when each order is received.

— Also —

1-YEAR-OLD SEEDLINGS

IDEAL FOR MAILING TRADE

\$3.00 per 100 — \$20.00 per 1000

Peonies

In our list of Peonies we have endeavored to select the better medium-priced varieties that cover a good range of colors. Division of 3 to 5 eyes.

Prices quoted are per dozen and per 100 in the order given.

Albatre 8.7 —Large, compact globular rose type. Milk-white shaded ivory, wide center petals tinged lilac, edged with minute line of carmine.....	\$5.00	\$35.00
Albert Crouse 8.6 —Very large compact bomb, rose white flecked crimson	6.00	40.00
Alexander Dumas 7.1 —Medium size, light violet-rose, creamy white collar of narrower petals, mingled with wide center petals	3.50	25.00
Asa Gray 8.1 —Large semi-rose, pale lilac, sprinkled with dots of deeper lilac. Fragrant	7.00	50.00
Augustin D'Hour —Large medium compact bomb. Dark red slightly silvery reflex. Medium tall	5.00	35.00
Auguste Villaume 7.3 —Extra large compact globular rose-type, dark violet-rose. Tall strong grower.....	6.50	45.00
Baroness Schroeder 9.0 —Flesh white fading to milk white, globular rose type, very large	7.00	50.00
Boule de Neige 8.0 —Semi-rose type; pure white, bordered carmine, perfect cup shaped bloom	6.00	40.00
Carnea Elegans —Clear flesh pink.....	6.50	45.00
Couronne D'Or 8.1 —Large, flat, semi-rose type. Pure white with ring of yellow stamens around tuft of center petals tipped carmine.....	4.00	30.00
Dorchester 7.7 —Large compact rose type, pale hydrangea-pink, sulphur white collar, no crimson flecks.....	6.00	40.00
Duchess De Nemours 8.1 —Pure white crown, sulphur white collar, no crimson flecks	3.00	20.00
Edulis Superba 7.6 —Large loose flat crown, bright mauve pink, early.....	3.00	20.00
Emperor Nichols 7.1 —Dark crimson rose, tall strong grower	5.00	35.00
Eugenie Verdier 8.06 —Large med. compact flat semi-rose, pale hydrangea-pink, collar lighter, flecked crimson	6.00	40.00

PEONIES—Continued

Felix Crousse 8.4 —Large globular typical bomb, brilliant red	6.00	40.00
Festiva Maxima 9.3 —Very large globular rose type, pure white center prominently flecked crimson, outer petals sometimes faint lilac	3.00	20.00
German Bigot 8.5 —Pale lilac rose, guards splashed crimson, large and compact	7.00	50.00
James Kelway 8.7 —Very large, loose rose type, rose white changing to milk white, tinged yellow at base of petals	7.00	50.00
Lady Bramwell 6.0 —Soft silvery pink	3.00	20.00
L'Indispensable 7.3 —Globular rose type, lilac-white shading to pale violet-rose toward center	5.00	35.00
Livingstone 8.1 —Very large compact perfect rose-type, pale lilac-rose with silvery tips, central petals flecked carmine	6.00	40.00
Lora Dexheimer 8.4 —Intense crimson, immense semi-rose	20.00	140.00
Marguerite Gerard 8.4 —Large compact semi-rose developing into crown with stamens, very pale hydrangea-pink, fading to nearly white, central petals flecked dark carmine	3.50	25.00
Mme. Bollet 7.4 —Very compact globular rose-type, pale lilac-pink, silvery reflex	3.00	20.00
Mme. Calot 8.1 —Large rose-type, pale hydrangea-pink center shading darker, collar tinged silver	3.50	25.00
Mme. Coste 6.5 —Globular bomb, developing a low crown, guards and center hydrangea-pink, collar cream white, center flecked crimson.....	3.50	25.00
Mme. Crousse 7.9 —Medium size, globular crown, pure white, center flecked with crimson	6.00	40.00
Mme. De Galhau 7.5 —Medium large compact globular rose type, guards rose white, center pale lilac rose. Fragrant	3.50	25.00
Mlle. Desbuissons 7.8 —Compact semi-rose type, violet rose center fading to milk white	7.00	50.00
Mme. De Verneville 7.9 —Large very full bomb, pure white, center blush when first open fading to pure white carmine specks	3.50	25.00
Mme. Emile Lemoine 8.9 —Large globular compact rose type, milk white	6.00	40.00

PEONIES—Continued

Mme. Emile Galle 8.5—Large compact rose type, deep lilac white		
Mlle. Leonie Calot 7.6—Salmon pink shading to soft flush white.....	6.50	45.00
Mons Jules Elie 9.2—Pale lilac-rose, collar lighter shaded amber yellow at base, very large medium compact high crown	7.00	50.00
Mons Krelage 7.7—Large compact semi-rose type, dark solferino-red, with silvery tips	5.00	35.00
Octavie Demay 8.5—Very large flat crown, guards and center pale hydrangea-pink, collar almost white.....	6.50	45.00
Officinalis Alba Plena—Large convex double bloom, pure white	6.00	40.00
Officinalis Rosea Plena—Rose pink, early	6.50	45.00
Officinalis Rubra—Large double globular bloom, brilliant crimson.....	6.50	45.00
Philomele 7.7—Medium, low flat crown, guards bright violet-rose, center of narrow amber-yellow petals changing to cream, as flower develops a crown appears, bright rose	6.00	40.00
Queen Victoria 6.8—Large globular, medium loose, low crown, milk-white guards, tinted flesh, center cream white with crimson spots.....	3.00	20.00
Reine Hortense 8.7—Very large, compact, semi-rose type, pink flecked crimson	12.00	80.00
Triomphe Du Nord 6.0—Very large medium compact bomb, light solferino-red with silvery reflex	3.00	25.00
Umbellata Rosea 7.4—Large informal rose type, guards violet-rose shading to amber white center	5.00	35.00
Venus 8.3—Very large high compact crown, pale hydrangea-pink, collar lighter	6.00	40.00



A View Across Our Lily Fields.

Liliums

We are devoting considerable attention and space to hardy Liliums, but confining our growing to the best varieties, and those that can be handled, not only by ourselves, but by our customers, with the maximum satisfaction. We have endeavored to eliminate all "poor keepers and doers."

Prices quoted are per dozen, per 100 and per 1,000 in the order given.

Canadense —Bell-shaped blossoms which vary in red and yellow colors. Three to five feet high	1.00	8.00	70.00
E. Leonard Joerg —Rich apricot, spotted, very fine	1.80	12.50	110.00
E. Mixed —Mixed shades of orange—	1.10	7.50	65.00
Hansoni —Attains height of three to five feet. Reflexed blossoms two inches across, petals bright orange-yellow, faintly spotted brown, eight to twelve in a cluster, flowering in June or early July	7.50	55.00	
Pardalinum (Leopard Lily)—Rich scarlet and yellow flowers, spotted with rich brown. Robust and free-flowering.....	2.00	13.00	120.00
Regale —The flowers are white, slightly suffused with pink, with a beautiful shade of canary yellow at the center, blending out part way up the trumpet. The fragrance is fascinating, similar to the Jasmine. A splendid hardy Lily for the garden, flowering about July 1st. Well-grown bulbs often produce five to eight blooms—			
4-5 inch bulbs, doz.,	\$4.00;	hundred,	\$30.00
5-7 inch bulbs, doz.,	\$6.00;	hundred,	\$40.00

LILIUMS—Continued

Superbum —Three to six feet high, flowers from five to forty, nodding brilliant orange-red. Blooms in July	1.60	10.00	88.00
Tigrinum —Fl. pl. (Double-Tiger)—Orange red, spotted black	1.50	10.00	90.00
Tigrinum Splendens —Single form; same colors	1.50	9.00	80.00
Tigrinum —Mixed, double and single—	1.00	8.00	70.00

Speciosum Lilies

Magnificum —A beautiful pure pink variety, exceeding in beauty the famed Melpomene—	2.25	16.50
Melpomene —Words cannot describe the beauty of this variety. Frosted white, spotted, clouded and bordered with pinkish crimson. Petals deeply recurved and widely ordered	2.00	15.00
Praecox or Album —Large, perfect and beautiful. Frosted white, with a tinge of buff at the top of petals. The blush-like fringe in each petal adds to the beauty	2.75	19.50
Rubrum —Deep rose, freely spotted crimson and mottled white; perfectly exquisite—	2.20	16.50

Miscellaneous Bulbs and Roots

Prices quoted are per dozen, per 100 and per 1000 in the order given.

APIOS

Tuberosa (Tuberous-rooted Wistaria)—Clusters of rich deep purple flowers which have a strong delicious violet fragrance—			
Tubers60	4.00	35.00

DELPHINIUMS

Belladonna	\$1.50	\$10.00	\$90.00
Bellamosa	1.50	10.00	90.00
Hybrids	1.50	10.00	90.00

DICENTRA SPECTABILIS

Bleeding Heart, or Seal Flower —An old-fashioned favorite; its long racemes of graceful heart-shape flowers are always attractive	Doz.,	\$4.00;	100,	\$30.00
Selected Sizes, Doz.,	\$6.00;	100,	\$40.00.	

FUNKIA, WHITE

Per Doz., \$1.75.

Per 100, \$10.00.

HEMEROCALLIS

Flava Major—Wax yellow60	4.50	40.00
Florham—Large golden yellow sweet scented—			
	.90	6.00	50.00
Gold Dust—Bright yellow, buds and reverse of petals bronze-gold. Two or three feet. May-June60	4.50	40.00

HYACINTHUS CANDICANS

(Cape Hyacinth)

A snow-white summer-flowering Hyacinth, growing 3 to 5 feet in height, gracefully surmounted with from 20 to 30 pure white bell-shaped flowers—

1 to 2 inches dia.75	5.00	45.00
2 to 3 inches dia.	1.00	7.00	60.00

ISMENE CALATHENA

Per Doz., \$1.25

Per 100, \$9.00

Per 1000, \$80.00

MADEIRA VINES

A most popular climber. Strong roots.

Selected60	4.00	35.00
Medium size50	3.00	25.00

OXALIS

(Summer Flowering)

Dieppi—Pure white; very fine.....	.10	.50	4.00
Lasandria—Rosy pink; beautiful cut foliage—			
	.10	.50	4.00
Shamrock — Clover-like foliage, pink blossoms10	.50	4.00
Mixed—Several colors10	.40	3.00
Named Mammoth Bulbs20	.80	6.00
Mammoth Mixed15	.70	5.00

SPIREAS

(Astilbe)

Filed grown clumps for forcing.

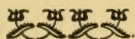
	Per Doz.	Per 100
Gladstone—Best white variety.....	\$3.50	\$25.00
Japonica	3.00	20.00
Peach Blossom—True peach blossom color with red stamens	3.50	25.00
Queen Alexander — The best known clear light pink	3.50	25.00
Rubens—Deep rose red	4.00	30.00

700 Acres

THE SHOW PLACE OF
LONG ISLAND

We invite you to visit us at

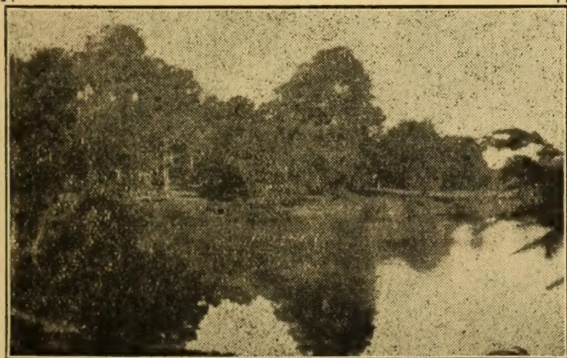
FLOWERFIELD



John Lewis Childs

INCORPORATED

Flowerfield, Long Island, N. Y.



**CHILDS'
GLADIOLI**

are noted the
world over for

**SUPERIOR
MERIT**